



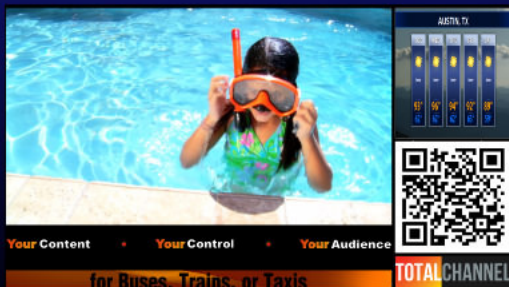
**DIGITAL SIGNAGE EVOLVED**

# SIGNAGE EVOLVED

Digital Signage Evolved is no longer just bulletin boards and basic scheduling. Evolution is a digital network that does everything well in any enterprise environment. Be it in a single building, across a campus, across the country, or around the world. Evolution lets organizations send live streams, video, text, notifications, data feeds, social media, pictures and graphics on any daily schedule, at any time, to any place.

It includes interactive development tools, mobile phone video on demand, live mobile OS cross platform sharing, video wall players, 4K, HD and standard definition players. Evolved digital signage lets a user control these features with unlimited departments and users, permissions, approvals, user auditing, content run reports, global monitoring, remote servicing, remote restart, and remote software updates.

Evolution is an elegant web based content creation tool that defines intuitive. Evolution works on multiple OS platforms, on multiple networks or securely over the web. Evolution is about owning a communications platform instead of renting it every month and it's about having your phone call answered right now instead of your email answered next week.



# CONTENT MANAGEMENT

INCLUDED IN EVERY SYSTEM

## Web Based Management & Network Distribution

Use any common browser to manage the system from anywhere. Place a screen anywhere the Player would have access to the Internet...worldwide. And manage an unlimited number of players from single Total Channel Server.

## Built In Content

Over 60 Drag and Drop Content Apps are included in the system. Social Media, Local Weather, News Feeds, Trivia Games, RSS Tickers, Local Traffic Reports, Network Feeds, and much more.

## UCV (User Content Viewer) for on Demand Video or Content

The system can be set up so that by using a simple mobile phone QR code scanner, a user can interact with any particular screen in the system. By scanning a QR code on the screen, the user can use their phone to view content available to that screen. The content can be videos, instructions, forms, coupons, directions, maps, advertising, etc. The system will also allow the user to choose to be directed to other websites for downloads or e-commerce sites to make a purchase. After the user is finished, the screen returns automatically to normal programming.

## Interactive Design Tools and Touch

Not just built in touch, but the tools needed to actually create Interactive Content. Total Channel's simple drag and drop tools lower the costs and speed up interactive development. Ongoing updates to Interactive content can be made quickly and easily in house.

## Video Wall Players

Total Channel Video Wall Players offer full resolution output. Plus they can use the same content as other screens in the system and are managed in the same way, simplifying operations. Additionally, each screen can be treated as a separate playlist if need be. The UCV feature even allows customers to interact with the video wall to view specific content.

## Supports Many Media Types with Standard Dual Outputs

The system supports all popular Media File formats. Players come standard with two outputs. This feature provides the output of unique content to two different screens, its like getting 2 units in 1!

## Unlimited Departments and Users

Users can be assigned different access rights. Create a department with limited access per display and even section. The "automated" approval system provides confidence that all content is checked before going live.

## System Management Tools

Comprehensive Campaign and Content Scheduling Tools, Analytics and Custom Reporting, Administrator dashboard with Live Player Thumbnails. Google Maps Overlay, Create proof-of-play reporting PDFs, GPS Triggers.

## Emergency Messages

Activate Real Time Emergency Messages. Allow messages to be set by location or group of locations. Active alert through API, cell phone or remote computer. Include text, video and sound in the alerts.

# ARCHITECTURE



Content Creation and Management  
From ANY Browser...Anywhere



Master Control

ANY  
Combination of  
Private Network  
or  
Public Internet

4K PLAYERS



1080 PLAYERS



VIDEO WALL  
PLAYERS



RACKMOUNT  
PLAYERS



SAMSUNG OS



ROOM SIGN PLAYERS

# TRAINING

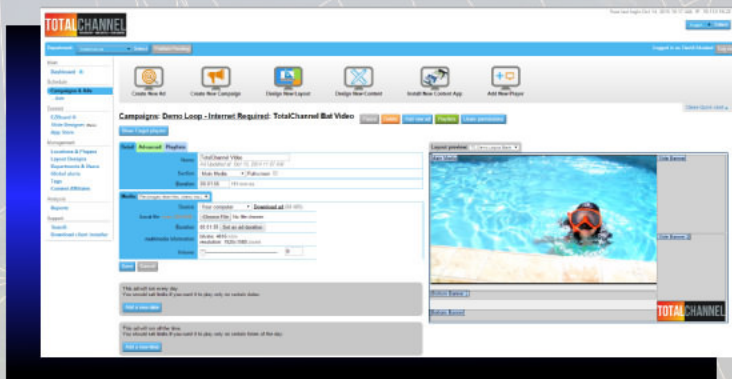
Total Channel offers a complete line-up of training products to ensure that every system has the right team in place with the right training. Whether its on site or web training, all training is custom tailored to not only create administrators and power users, but the also stand up the network and have it operational by the end of the training. Total Channel training is not generic and our overriding principal is to have a satisfied and successful launch for every customer through customized training.

# LAUNCH SERVICES

In addition to Training Service, Total Channel offers a trio of Launch Services packages that go far beyond basic training. These are packages of hours that can be used for anything from design and creative services to working with IT teams to properly set up the network. It is basically our very smart people working with you on every aspect of a successful network launch. Instead of a long list of service offerings you may not need, Launch Services is mix and match service portfolio that starts with creating a specific scope of work for your project's individual requirements and success.

# 24/7/365 SUPPORT

Total Channel stands alone in making high quality and obtainable support an unflinching priority. 24/7/365 means exactly that with us. Total Channel service and support is not just about response, but its also about designing the product to work well in the first place. It's quality hardware, built to be the best and not the cheapest. It's remote servicing through the web. Its about instant online player status and a watchdog that monitors the system ends an email if there is ever a problem.



Easy to Use Web Browser Interface



## REMOTELY FROM A BROWSER:

- Create, Add & Change Content
- Create or Change the Schedule
- View the Current Playback
- Send Emergency Alerts
- Create Interactive Touch Content
- Create Content on Demand
- Create Advertising Reports
- Have Unlimited Users
- Unlimited Departments
- Approvals and Permissions



Total Channel Media Inc.  
Austin, Texas

512-593-5093  
www.total-channel.com  
sales@total-channel.com

# CONFIGURATION

## TWO STEP CONFIGURATION

### STEP ONE

Select the Master Controller hardware based on how many screens will be in the network

*Small*  
**MasterControl 10**

*Professional*  
**MasterControl 50**

*Enterprise*  
**MasterControl 250**

*Super Enterprise*  
**MasterControl 750**

*Software Only*  
**MasterControl Virtual**

### STEP TWO

Select the Playout hardware to match the screens being used

*Basic 1080 Playback*  
**Playout Maxi**

*Heavy Duty 1080 Playback*  
**Playout 1**

*UHD/1080 Playback*  
**Playout 2**

*Rackmount 1080 Playback*  
**Playout Rackmount**

*Video Wall Playback*  
**Playout XW Series**

*Room Sign Playback*  
**TotalHarmony Series**

## STAND ALONE PRODUCTS

*Broadcast & Professional*  
**TotalSite Rackmount**

*Basic 1080 Playback*  
**TotalSite 1**

*Video Wall Playback*  
**TotalSite XW Series**

*Heavy Duty 1080 Playback*  
**TotalSite2**

## ACCESSORIES

*Data Interfaces*  
**XML/POS/Cal**

*Active Directory*  
**LDAP**

*Window OS*  
**Players & Servers**

*Video Inputs*  
**SD/HD**

*Training*  
**Web or Onsite**

*Launch Services*  
**Standard/Gold/Platinum**

Online e-product brochures available at:  
[www.total-channel.com](http://www.total-channel.com)